

ESCALIER R+1 A R+2
 HAUTEUR A MONTER 283
 15H / H= 18.86
 14G / G=23.76 + 1.5 Dde nez marche

01







Com



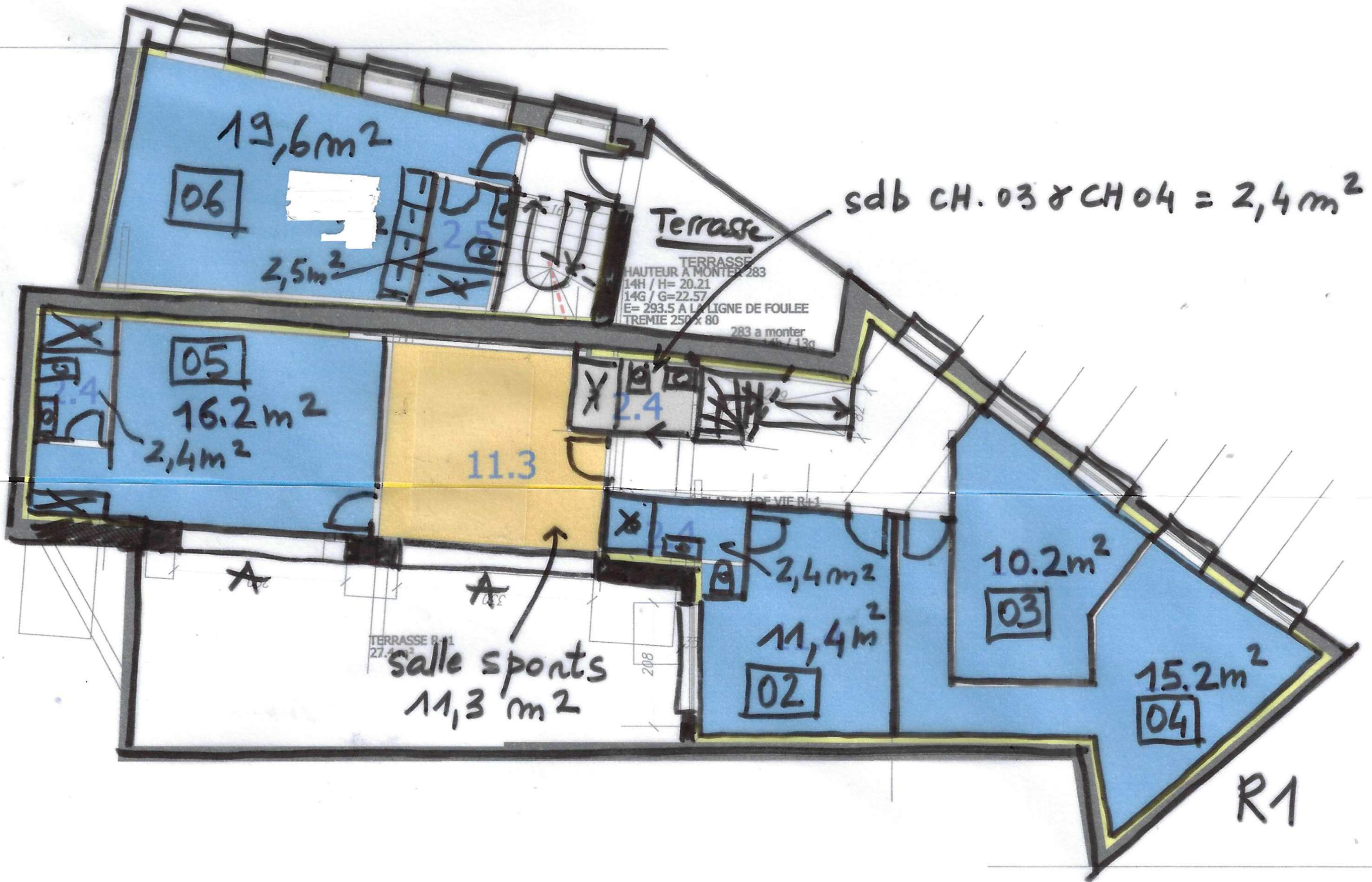






Sdb.01





19,6m²

06

2,5m²

Terrasse

sdb CH.03 & CH.04 = 2,4m²

TERRASSE
HAUTEUR A MONTER 283
14H / H= 20.21
14G / G=22.57
E= 293.5 A LA LIGNE DE FOULEE
TREMIE 250x80
283 a monter
14h / 13g

05

16.2m²

2,4m²

11.3

2.4

2,4m²

11,4m²

02

10.2m²

03

15.2m²

04

TERRASSE R+1
27.4m²
salle sports
11,3 m²

R1



06

03

04

05

02



Sdb.03/04





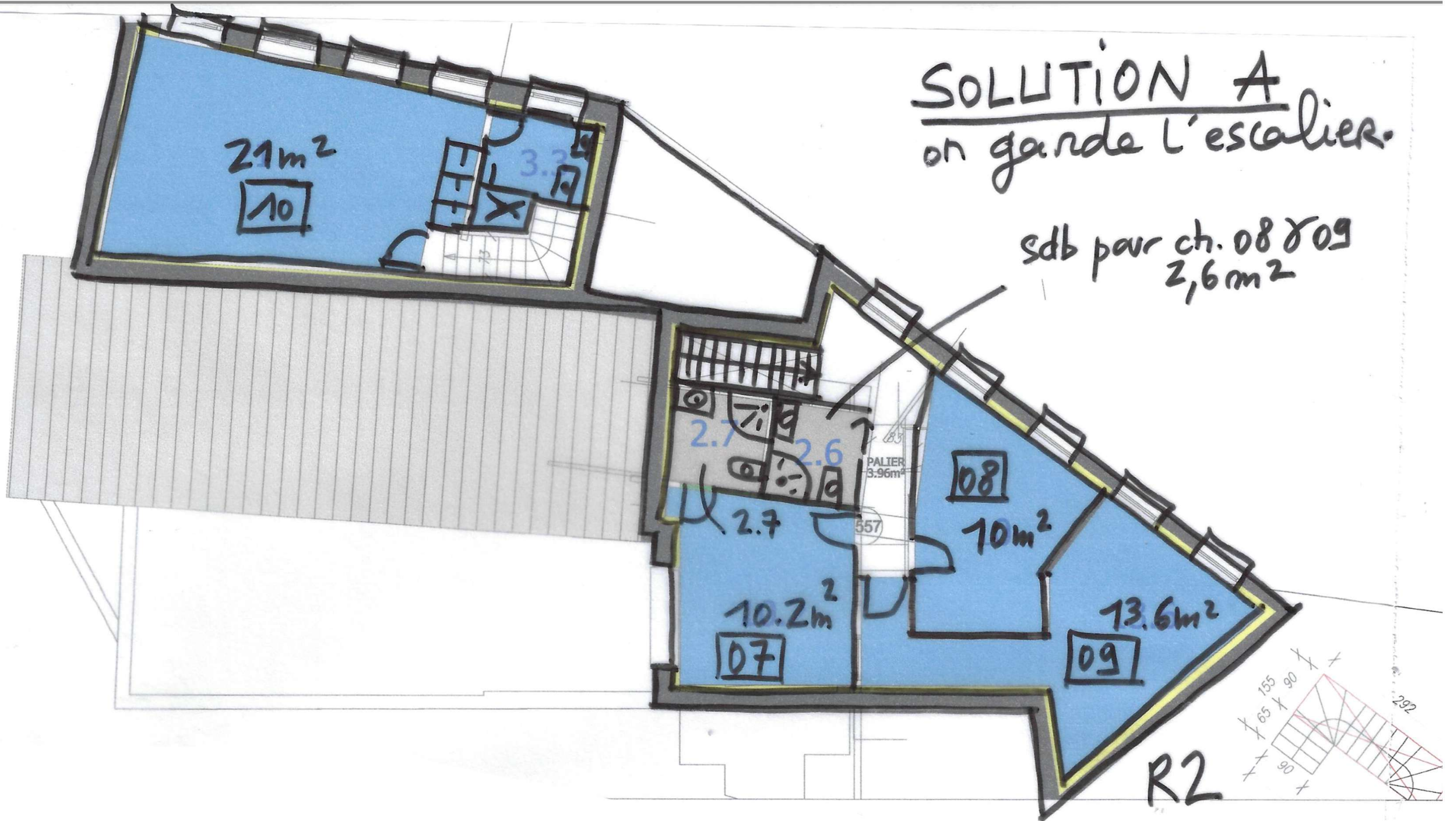




SOLUTION A

on garde l'escalier.

sdb pour ch. 08 & 09
2,6m²



10



08

09



07



